

# Become A Sligo Creek Water WatchDog

You can help Sligo Creek (and the Chesapeake Bay) by being a water detective in your everyday life. If you spot pollution - while walking your dog, taking a stroll or riding your bike – send a quick email and photo to Montgomery County’s water investigators.



**Discoloration**  
Can Indicate Toxins



**Paint**  
Any Color. Kills Fish

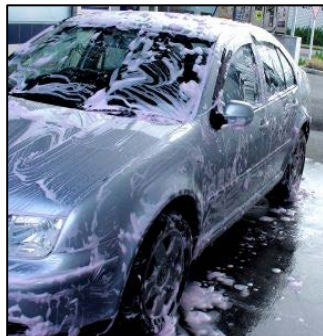
After 5 pm or a weekend also call the Park Police 301-949-3010

If you spot water pollution, send an **email & photo** to:

**ReportSligoPollution@fosc.org**



**Suds, Foam, Bubbles**  
Unnatural: Odor, Sheen



**Wash Water**  
Kills Fish



**Muddy Runoff**  
Suffocates Stream Life



**Exposed Soil**  
Can Create Muddy Runoff

# ReportSligoPollution@fosc.org

If you spot water pollution, just send an **email & photo:**

**Subject Line:** Pollution, Location, Date & Time

**Text Body:** Your Name & Phone; and Water Color, Clarity, Debris, Odor

And, if after 5 pm or a weekend also call the Park Police 301-949-3010



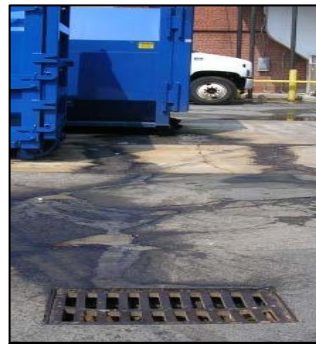
## Observe. Report. Improve.



**Construction Site  
Silt Fence Failure**  
Sediment Kills Aquatic life



**Sewage Spill**  
May be Manhole Leak  
Threat to health & recreation



**Leaking Dumpster**  
Attracts rats, leaks bacteria  
& grease into storm drains

### Top Pollutants in our Watershed:

- Trash
- Sediment
- Sewage
- Chlorinated Water  
(swimming pool discharge,  
water main breaks, hot tubs)
- Oil & Grease
- Wash Water  
(car, laundry, power washing)
- Chemicals  
(paint, concrete washout,  
commercial cleaning  
products)
- Yard Waste
- Fertilizer overuse

## Nothing Except Rain Should Go Into Our Water Ways

Funded by a grant to the Friends of Sligo Creek from the Chesapeake Bay Trust, through Montgomery County's Department of Environmental Protection Water Quality Protection Charge Program.

